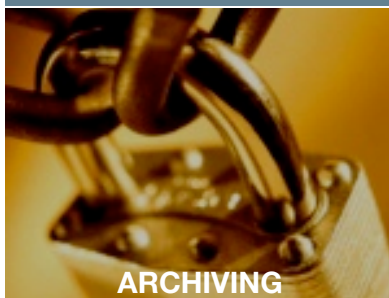


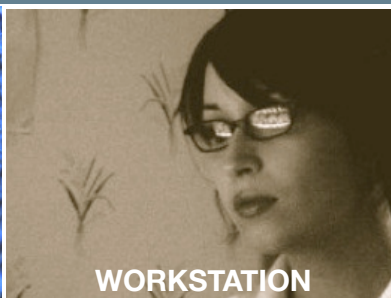
## WebWorkstation



**ARCHIVING**



**WEB DISTRIBUTION**



**WORKSTATION**

CRITERIA	SPECIFICATION	CRITERIA	SPECIFICATION	CRITERIA	SPECIFICATION
Capacity	750GB (approximately 29,000 CR images)	Web Users	Unlimited Users. 10 Simultaneous. Never any licenses to purchase.	Display	24" Digital Widescreen Landscape with 1920x1080 (2.0MP) Resolution.
Storage Type	RAID 1, Mirrored Drives	Supported Operating Systems for Web Image Review	Conventional PC's or Tablet PC's. Windows 2000/XP/Vista/7, Mac OS X, Sun Solaris, Linux, Apple iPhone & iPod Touch	Image Output	Print to Paper, DICOM Print to Laser Imagers, Route studies to other DICOM destinations, Email studies directly from Workstation.
Automatic Routing	Can be configured to route to other DICOM devices by AETitle, Modality, and other parameters.	Supported Browsers for Web Viewing	Windows: Internet Explorer, Firefox; Mac: Firefox, Camino, Safari 3 & 4; Solaris & Linux: Firefox; iPhone/iPod Touch: Mobile Safari. All Web access is 128-bit encrypted for security.	Export of Images	Export images as graphic files for inclusion with scientific papers or presentations. Annotated images may be saved to built-in archive to augment images from the original study.
DICOM Queriable by other devices	WebWorkstation can be configured to permit DICOM query & retrieve by other workstations.	Thumbnail Image Preview	Provides instant visual previews of patient images.	CD & DVD Creation	Single or Multiple studies may be burned to each disk. Viewer is automatically deposited on each disk.
DICOM Compliant	Fully DICOM 3.0 Compliant	Nested Query	Provides immediate display of patient's full imaging history	CD & DVD Importation	Patient studies on disks from other institutions may be imported and saved to the archive.
Can Accept Additional Modalities	Yes, at no cost. No change in system configuration is necessary.	Web Tools	Window Width/ Window Level, Zoom, Pan, Scroll, Image Rotation*, Mirror*, Save images as graphic files (*browser dependent)	Workstation Review Tools	Window Width/Window Level, Distance/Angle Measurements, Zoom, Magnifying Glass, ROI, Rotation, Cine, Cobb Angle, Annotation, Split Screen Display, etc.
Image Storage	DICOM	Web Print to Paper	Yes, using print functions supported by browser.	FDA and CE Certified	Yes.

**WebWorkstation** is specifically designed for Private Practice. Featuring secure DICOM storage, Integrated Web Distribution and a Full Workstation Environment, **WebWorkstation** is the complete DICOM Solution for your facility. With one simple and easy to maintain system, your images are securely stored and displayed at your workstation and are instantly available to you for fast image review from within your facility, or nearly anywhere you travel.

### SUPPORT

12-Month Remote Support and Software Updates

Included

36-Month On-Site Hardware Support

Included

Specifications subject to change without notice.

Precision Diagnostic Systems, Inc.  
2N353 Landrose  
Maple Park, IL 60151  
630 365-1123  
[www.precisiondiagnostic.com](http://www.precisiondiagnostic.com)